



Caledonian

Railway Cables

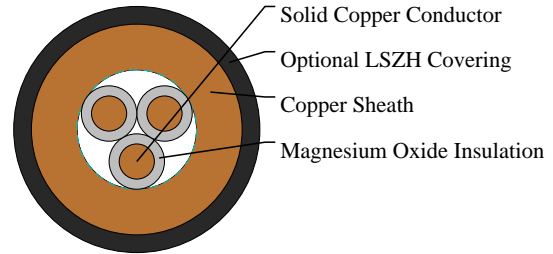
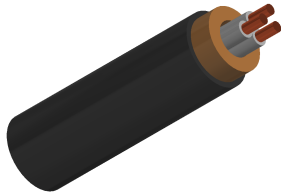
www.caledonian-cables.com

marketing@caledonian-cables.com

0.75KV Fire Survival Mineral Insulated Multicore LSZH Cables to EME-SP-14-028

Heavy Duty 0.75KV Grade

RF14028H-MICC-450/750V-3G1.5S



APPLICATIONS

These fire survival cables are designed for installation in hazardous installations and radioactive environments.

STANDARDS

EME SP 14 028

BS 6387 CWZ

BS 5839-1 Standard

BS 5839-1 Enhanced

BS 7346-6

BS EN 60702

VOLTAGE RATING

750V

CABLE CONSTRUCTION

Conductors: Solid plain copper conductors.

Insulation: Magnesium Oxide.

Outer sheath: Plain copper sheath with optional LSZH covering.

PHYSICAL AND THERMAL PROPERTIES

Minimum Bending Radius: 2 x OD(D<7); 3 x OD(7 ≤ D<12); 4 x OD(12 ≤ D<15); 6 x OD(D ≥ 15)

Temperature Range: -80°C to +105°C

DIMENSION AND PARAMETERS

No. of Cores × Cross-sectional Area	Conductor Diameter	Cross Sectional Area of Copper Sheath	Nom. Overall Diameter	Approx. Weight	Max. DC Resistance at 20°C
No.×mm ²	mm	mm ²	mm	kg/km	Ω/km
3 x 1.5	1.39	12	9.8	290	12.1



Caledonian

Railway Cables

www.caledonian-cables.com

marketing@caledonian-cables.com



Highly Flexible



Impact Resistant



Insulation
Integrity FE180



Laid In Ducts



Oil Resistant



Water Resistant